

# AECOM

**PROJECT**  
BALLIEMEANOCH  
PUMPED STORAGE  
HYDRO  
**CLIENT**  
ILI (Borders PSH) Ltd.

**CONSULTANT**  
AECOM Limited  
177 Bothwell Street  
Glasgow, B2 7ER  
T +44(0)141 202 0500  
www.aecom.com

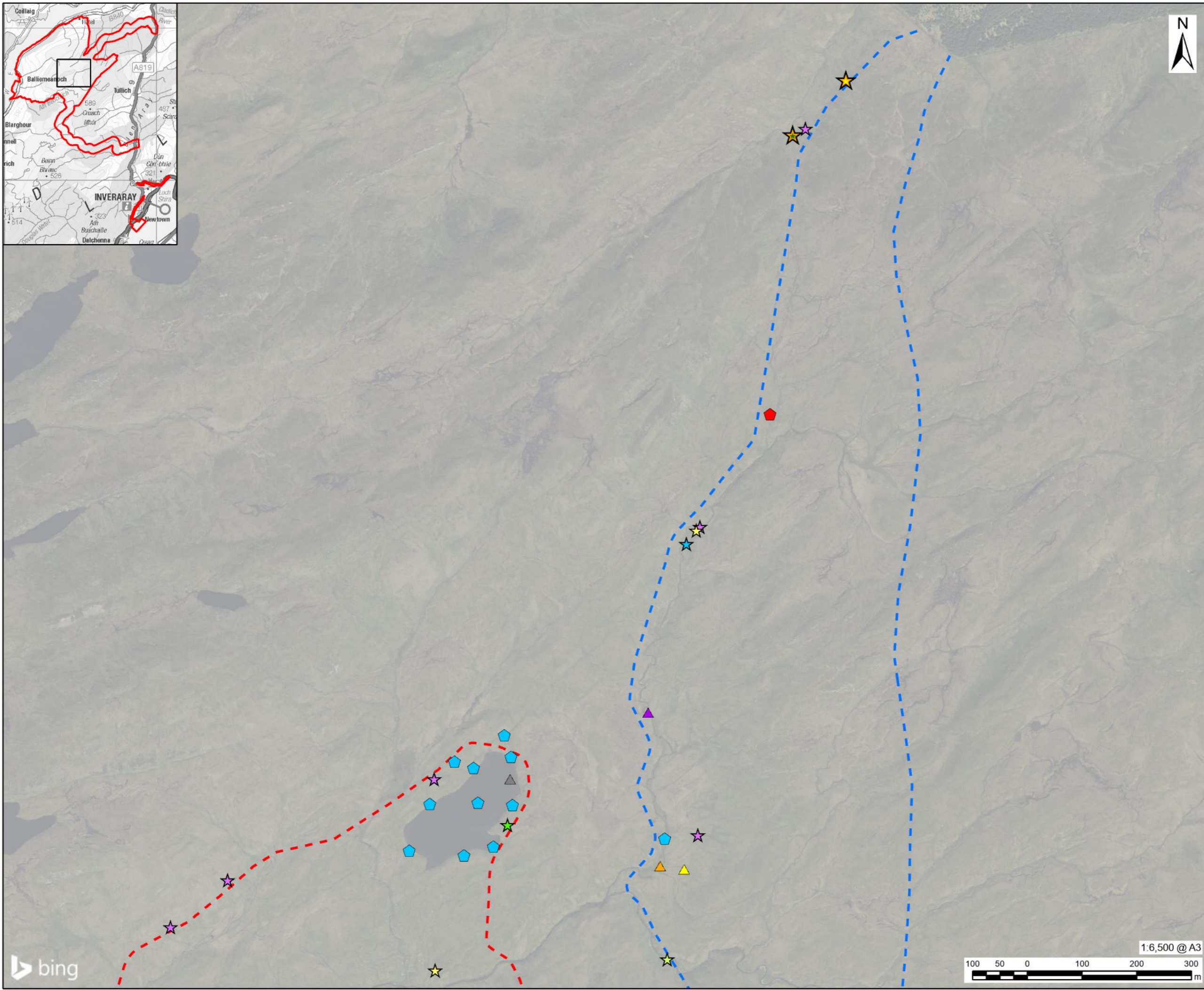
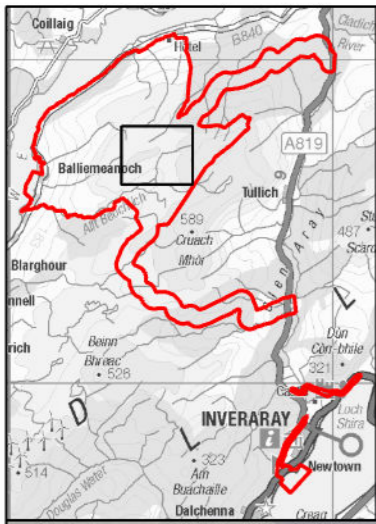
- LEGEND**
- Development Boundary
  - Butterflies**
  - ★ Dark green fritillary
  - ★ Small heath
  - ★ Green hairstreak
  - ★ Scotch argus
  - ★ Peacock
  - ★ Painted lady
  - ★ Green-veined white
  - ★ Orange-tip
  - ★ White species
  - Dragonflies and damselflies**
  - ⬠ Common blue damselfly
  - ⬠ Large red damselfly
  - Butterfly transects routes**
  - Transect A (2019)

**NOTES**  
Reproduced from Ordnance Survey digital map data © Crown copyright 2023. All rights reserved. Licence number 0100031673.  
© 2024 Microsoft Corporation © 2024 Maxar ©CNES (2024) Distribution Airbus DS.

**ISSUE PURPOSE**  
DRAFT  
**PROJECT NUMBER**  
60570241  
**FIGURE TITLE**  
Butterfly and Dragonfly Transect Results  
**FIGURE NUMBER**  
Figure 6.14 (Sheet 1 of 5)



This drawing has been prepared for the use of AECOM's client. It may not be used, modified, reproduced or relied upon by third parties, except as agreed by AECOM or as required by law. AECOM accepts no responsibility, and denies any liability whatsoever, to any party that uses or relies on this drawing without AECOM's express written consent. Do not scale this document. All measurements must be obtained from the stated dimensions.



# AECOM

**PROJECT**  
BALLIEMEANOCH  
PUMPED STORAGE  
HYDRO  
**CLIENT**  
ILI (Borders PSH) Ltd.

**CONSULTANT**  
AECOM Limited  
177 Bothwell Street  
Glasgow, B2 7ER  
T +44(0)141 202 0500  
www.aecom.com

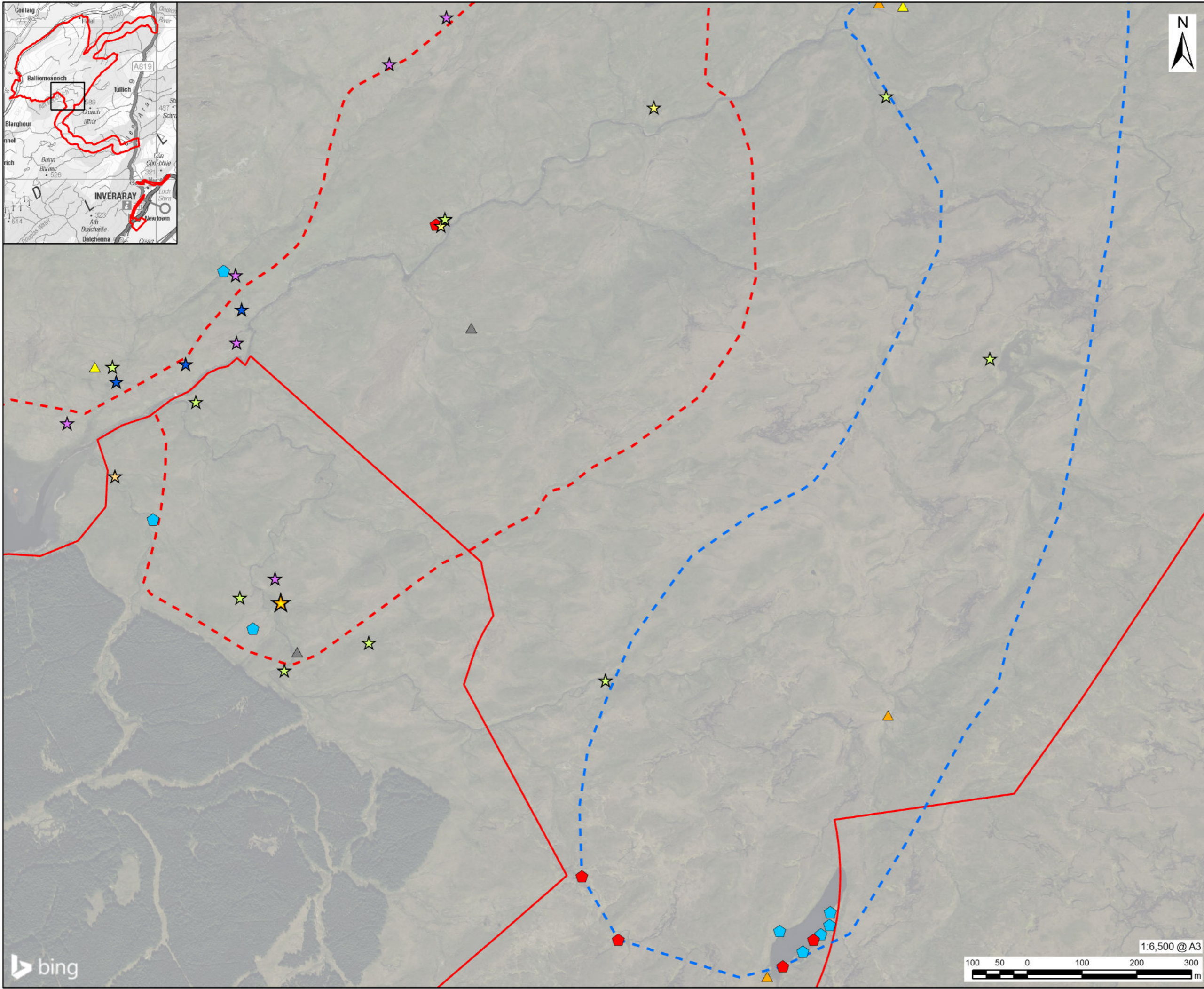
- LEGEND**
- Development Boundary
  - Butterflies**
  - ★ Dark green fritillary
  - ★ Fritillary species
  - ★ Small heath
  - ★ Green hairstreak
  - ★ Ringlet
  - ★ Painted lady
  - ★ Green-veined white
  - Dragonflies and damselflies**
  - ▲ Golden-ringed dragonfly
  - ▲ Common hawkler
  - ▲ Black darter
  - ▲ Unknown dragonfly
  - ◆ Common blue damselfly
  - ◆ Large red damselfly
  - Butterfly transects routes**
  - Transect A (2019)
  - Transect B (2019)

**NOTES**  
Reproduced from Ordnance Survey digital map data © Crown copyright 2023. All rights reserved. Licence number 0100031673.  
© 2024 Microsoft Corporation © 2024 Maxar ©CNES (2024) Distribution Airbus DS.

**ISSUE PURPOSE**  
DRAFT  
**PROJECT NUMBER**  
60570241  
**FIGURE TITLE**  
Butterfly and Dragonfly Transect Results  
**FIGURE NUMBER**  
Figure 6.14 (Sheet 2 of 5)



This drawing has been prepared for the use of AECOM's client. It may not be used, modified, reproduced or relied upon by third parties, except as agreed by AECOM or as required by law. AECOM accepts no responsibility, and denies any liability whatsoever, to any party that uses or relies on this drawing without AECOM's express written consent. Do not scale this document. All measurements must be obtained from the stated dimensions.



# AECOM

**PROJECT**  
**BALLIEMEANOCH**  
**PUMPED STORAGE**  
**HYDRO**

**CLIENT**  
 ILI (Borders PSH) Ltd.

**CONSULTANT**  
 AECOM Limited  
 177 Bothwell Street  
 Glasgow, B2 7ER  
 T +44(0)141 202 0500  
 www.aecom.com

**LEGEND**

- Development Boundary
- Butterflies**
- ★ Fritillary species
- ★ Small heath
- ★ Green hairstreak
- ★ Scotch argus
- ★ Painted lady
- ★ Green-veined white
- ★ Orange-tip
- Dragonflies and damselflies**
- ▲ Golden-ringed dragonfly
- ▲ Black darter
- ▲ Unknown dragonfly
- ◆ Common blue damselfly
- ◆ Large red damselfly
- Butterfly transects routes**
- - - Transect A (2019)
- - - Transect B (2019)

**NOTES**

Reproduced from Ordnance Survey digital map data © Crown copyright 2023. All rights reserved. Licence number 0100031673.

© 2024 Microsoft Corporation © 2024 Maxar ©CNES (2024) Distribution Airbus DS.

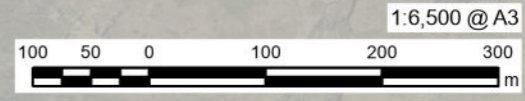
**ISSUE PURPOSE**

DRAFT

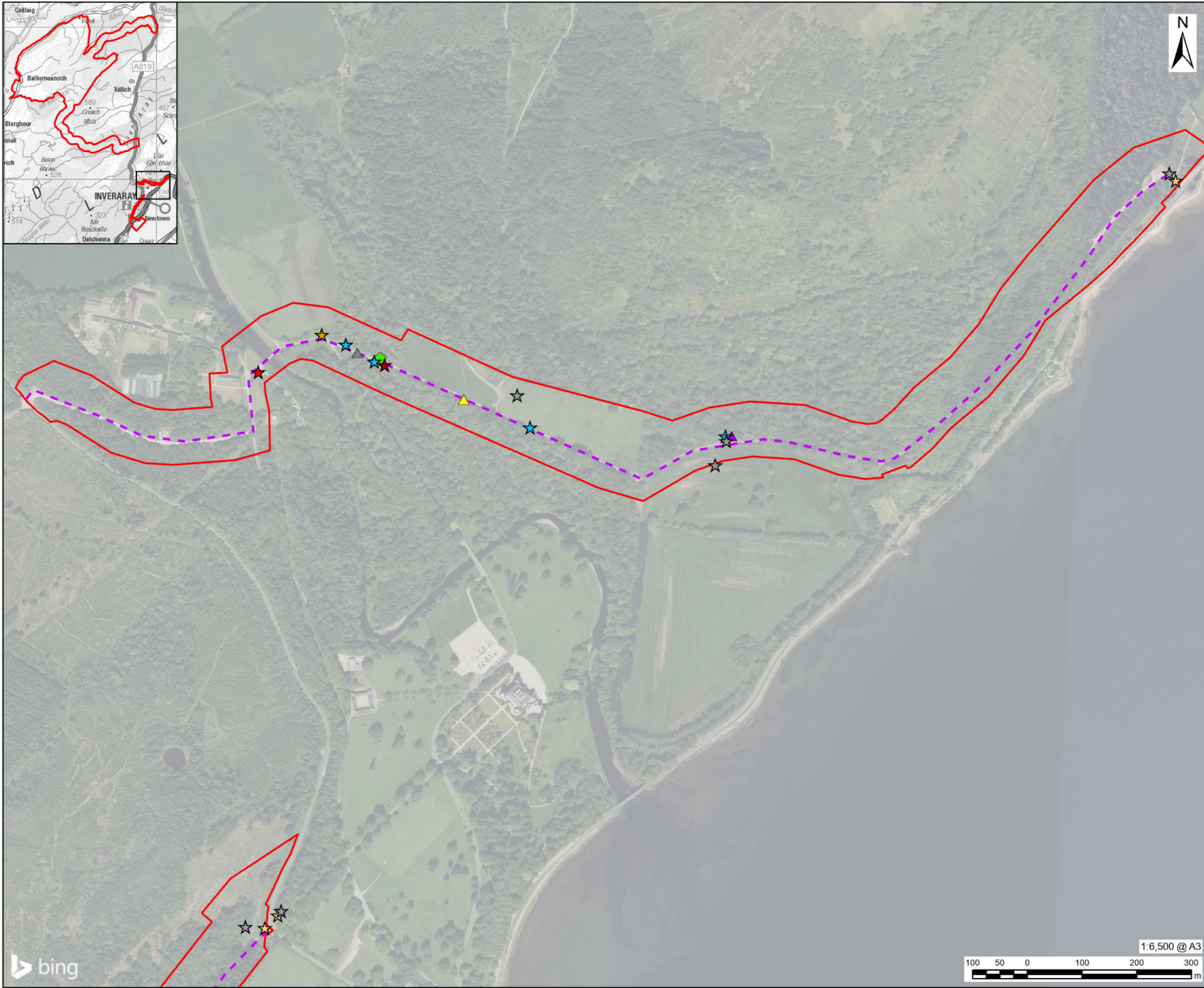
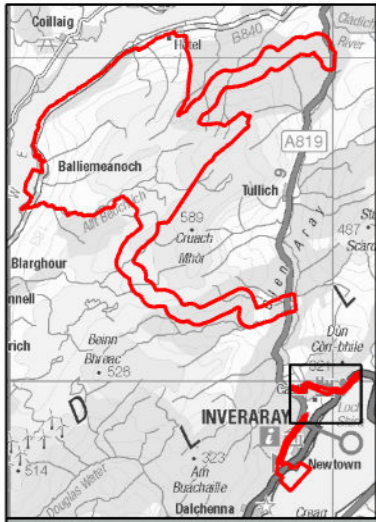
**PROJECT NUMBER**  
 60570241

**FIGURE TITLE**  
 Butterfly and Dragonfly Transect Results

**FIGURE NUMBER**  
 Figure 6.14 (Sheet 3 of 5)



This drawing has been prepared for the use of AECOM's client. It may not be used, modified, reproduced or relied upon by third parties, except as agreed by AECOM or as required by AECOM or as required by AECOM. AECOM accepts no responsibility, and denies any liability whatsoever, to any party that uses or relies on this drawing without AECOM's express written consent. Do not scale this document. All measurements must be obtained from the stated dimensions.



- LEGEND**
- Development Boundary
  - Butterflies**
  - ★ Ringlet
  - ★ Small tortoiseshell
  - ★ Peacock
  - ★ Red admiral
  - ★ Orange-tip
  - ★ White species
  - Dragonflies and damselflies**
  - ▲ Golden-ringed dragonfly
  - ▲ Common hawker
  - ▲ Unknown dragonfly
  - ▲ Beautiful demoiselle
  - Butterfly transects routes**
  - - - Transect C (2021)

**NOTES**

Reproduced from Ordnance Survey digital map data © Crown copyright 2023. All rights reserved. Licence number 0100031673.

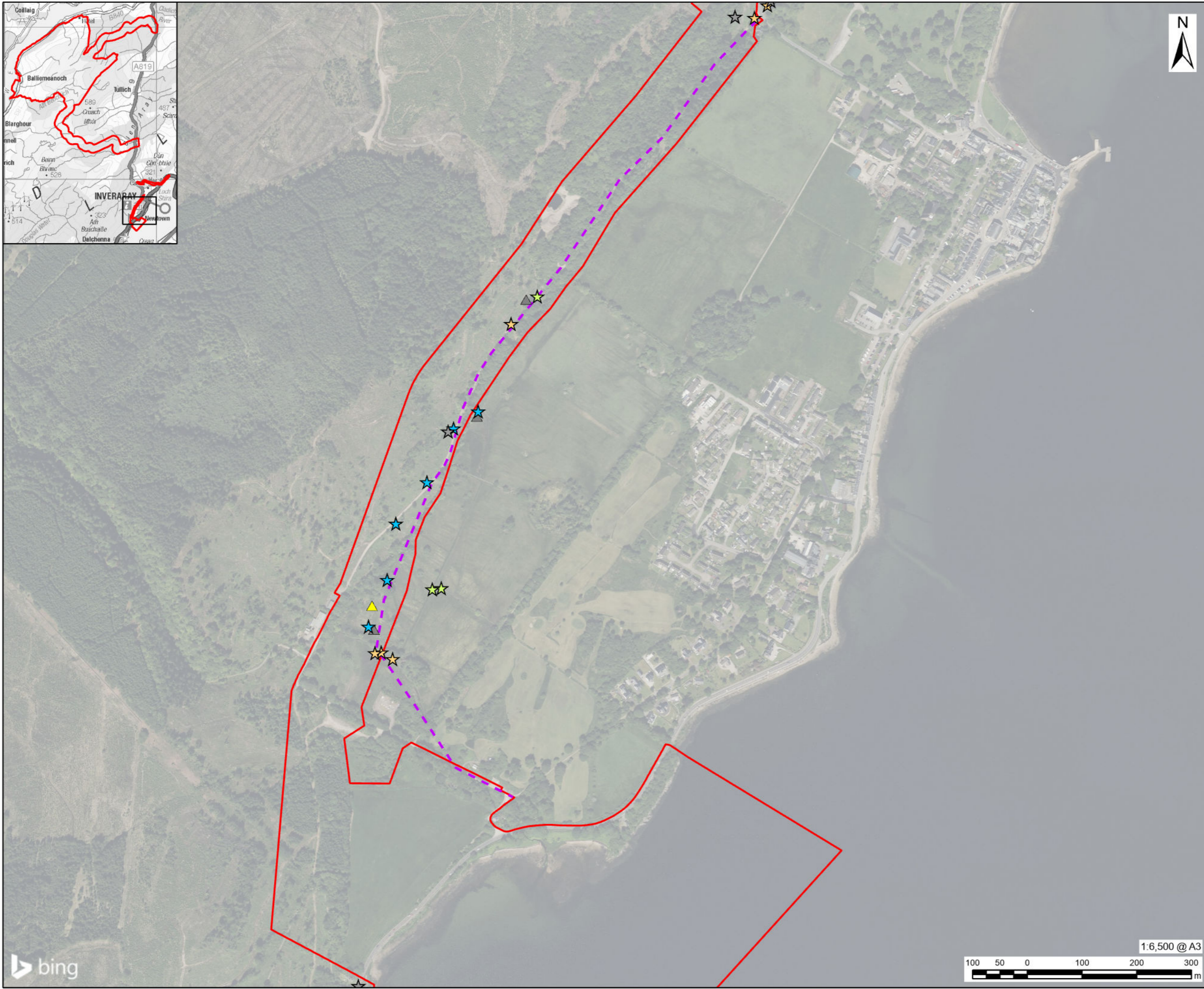
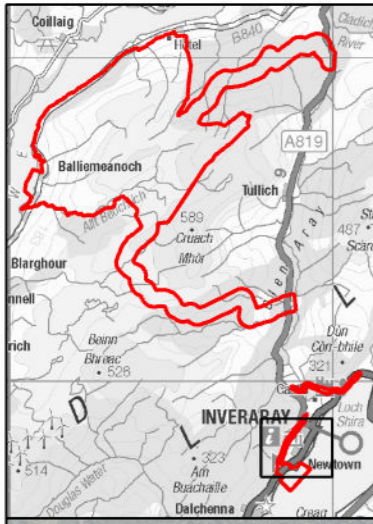
© 2024 Microsoft Corporation © 2024 Maxar ©CNES (2024) Distribution Airbus DS.

**ISSUE PURPOSE**  
DRAFT

**PROJECT NUMBER**  
60570241

**FIGURE TITLE**  
Butterfly and Dragonfly Transect Results

**FIGURE NUMBER**  
Figure 6.14 (Sheet 4 of 5)



# AECOM

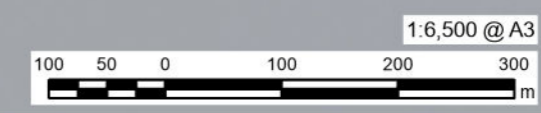
**PROJECT**  
BALLIEMEANOCH  
PUMPED STORAGE  
HYDRO  
**CLIENT**  
ILI (Borders PSH) Ltd.

**CONSULTANT**  
AECOM Limited  
177 Bothwell Street  
Glasgow, B2 7ER  
T +44(0)141 202 0500  
www.aecom.com

- LEGEND**
- Development Boundary
  - Butterflies**
  - ★ Ringlet
  - ★ Green-veined white
  - ★ Orange-tip
  - ★ White species
  - Dragonflies and damselflies**
  - ▲ Golden-ringed dragonfly
  - ▲ Unknown dragonfly
  - Butterfly transects routes**
  - Transect C (2021)

**NOTES**  
Reproduced from Ordnance Survey digital map data © Crown copyright 2023. All rights reserved. Licence number 0100031673.  
© 2024 Microsoft Corporation © 2024 Maxar ©CNES (2024) Distribution Airbus DS.

**ISSUE PURPOSE**  
DRAFT  
**PROJECT NUMBER**  
60570241  
**FIGURE TITLE**  
Butterfly and Dragonfly Transect Results  
**FIGURE NUMBER**  
Figure 6.14 (Sheet 5 of 5)



This drawing has been prepared for the use of AECOM's client. It may not be used, modified, reproduced or relied upon by third parties, except as agreed by AECOM or as required by law. AECOM accepts no responsibility, and denies any liability whatsoever, to any party that uses or relies on this drawing without AECOM's express written consent. Do not scale this document. All measurements must be obtained from the stated dimensions.